

SENSE · PRODUCT DATA SHEET

AS-TL

Sense Connected Troffer · Interior

Built for the open ceiling.

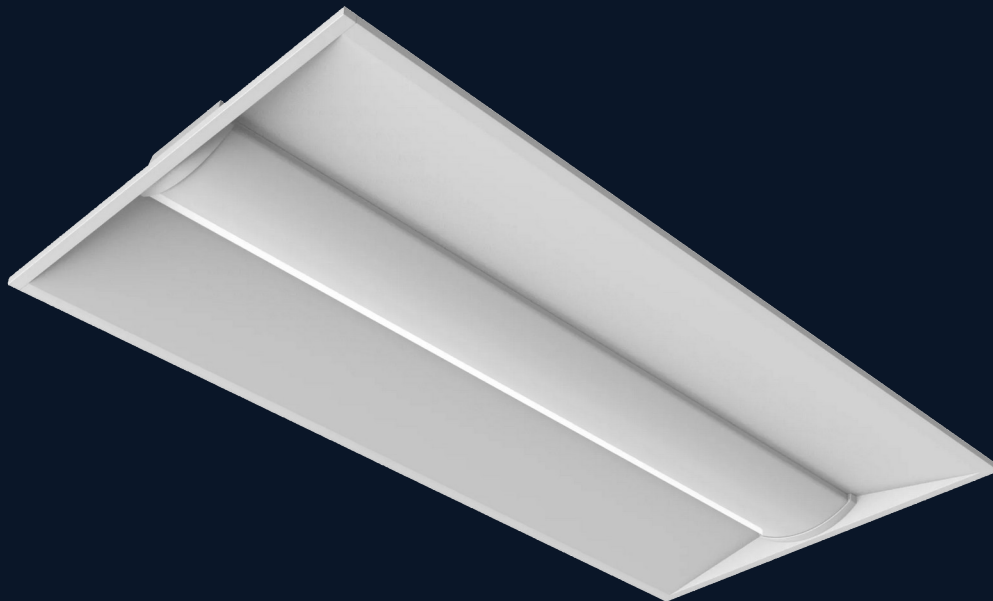
Recessed LED troffer for office, school, and hospital ceilings. Native to the Sense Bluetooth mesh — every fixture is a node, every node a sensor. Two grid sizes: 2×2 (26W) and 2×4 (43W). Dynamic White (3000 - 5000K) tunable across both. Designed for low-glare visual comfort in human-occupied spaces.

120° NATIVE
BEAM

DRY/DAMP

0-10V · SENSE

120-277VAC



AVAILABLE WITH*

Sense™

OPTICAL PERFORMANCE

Two grid sizes.

One tunable platform. 3000 - 5000K Dynamic White across both.

<p>26W</p> <p>2x2 Troffer</p> <p>Grid · 603 × 603 mm</p> <hr/> <p>Lumens · 5000K 3,100 lm</p> <p>Tuning Range 3000 - 5000K (DW)</p> <p>Native Beam 120° (F - Native)</p> <p>CRI 80 standard</p> <p>Efficacy 119 lm/W typ</p> <p>Control 0-10V (100 - 1%)</p> <p>Mesh Sense BLE · optional</p>	<p>43W</p> <p>2x4 Troffer</p> <p>Grid · 1213 × 603 mm</p> <hr/> <p>Lumens · 5000K 5,500 lm</p> <p>Tuning Range 3000 - 5000K (DW)</p> <p>Native Beam 120° (F - Native)</p> <p>CRI 80 standard</p> <p>Efficacy 128 lm/W typ</p> <p>Control 0-10V (100 - 1%)</p> <p>Mesh Sense BLE · optional</p>	<p>Dynamic</p> <p>Tunable White</p> <p>3000 - 5000K</p> <hr/> <p>Channels 2 (CW + WW)</p> <p>Range Warm to neutral</p> <p>Use Cases Office · School · Health</p> <p>Visual Low-glare diffuser</p> <p>App Scenes 5 presets shipped</p> <p>Mode Comfort · Eco · Dynamic</p> <p>Mesh Sense BLE · optional</p>
---	--	--

OPTICAL ACCESSORIES

Both sizes ship with the same 2-channel tunable engine. Standard recessed grid mounting.

Surface-mount and pendant accessory kits available.

ELECTRICAL · ALL VARIANTS

Input Voltage	120-277VAC, auto-ranging, 50/60Hz
Power Consumption	26 W (2x2) / 43 W (2x4) typ. steady state
Power Factor	0.99 @ 120VAC · 0.90 @ 277VAC
Surge	2kV maximum common (Gnd to L, Gnd to N)

MECHANICAL · ENVIRONMENT · COMPLIANCE

Built for the ceiling.

Shared across both grid sizes.

Mechanical

Dimensions

603 × 603 × 55 mm · 2×2
1213 × 603 × 55 mm · 2×4
23.7 × 23.7 / 47.8 × 23.7 in

Weight

≈ 3.8 kg · 2×2
≈ 6.5 kg · 2×4

Housing

Aluminum
White powder-coated

Lens

Polycarbonate diffuser

Connections

Integral lead

Mounting

Recessed grid

Environment

Operating Temp

-30 to 50° C (-22 to 122° F)

Startup Temp

-20 to 50° C (-4 to 122° F)

Storage Temp

-40 to 80° C (-40 to 176° F)

Ingress Rating

Dry / Damp

Impact

IK08

Vibration

ANSI C136.31, 3G

Humidity

0 - 95%, non-condensing

Corrosion

ASTM B117 > 1,500 hrs

Compliance

Approbation

CE

Location

Dry · Damp

Standards

ANSI C136.31

ASTM B117

IEC 62262 (IK)

RoHS

Compliant

Patent Portfolio

Protected by an 80+
patent portfolio across
US, EU, Asia

AVAILABLE WITH*

Sense™

D I M E N S I O N S · P H O T O M E T R I C S

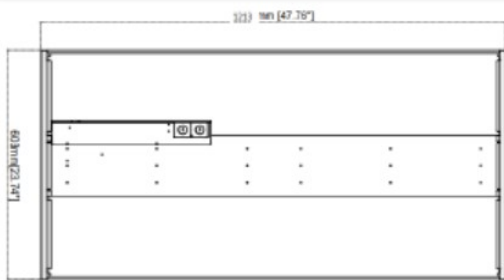
Geometry and output.

Two grid sizes · 43W (2x4) reference (120° native, 5000K, 80CRI)

Dimensions



2x2 · 603 × 603 × 55 mm



2x4 · 1213 × 603 × 55 mm

All dimensions in mm. Detailed CAD drawings available on request.

Photometrics

ASTL-43-F · 43W (2x4) · 120° Native · 5000K · 80CRI

Beam Angle	120°
Lumens	5,500 lm
Input Power	43 W
Efficacy	128 lm/W
Peak Candela	1,140 cd

ZONAL LUMEN SUMMARY

Zone (°)	Lumens	% Lum.
0-30	2,723	49.5
0-40	4,290	78.0
0-60	5,390	98.0
60-90	110	2.0
0-90	5,500	100.0

CENTER BEAM · BEAM WIDTH

HEIGHT · FC / LX · BEAM Ø (m)

2.5 m	183 / 1968	8.7
3.0 m	127 / 1366	10.4
3.5 m	93 / 1002	12.1
4.0 m	71 / 765	13.9
5.0 m	46 / 495	17.3

Full IES photometric files for each wattage and beam option available at arco-illumination.com or on request.

C O N T A C T

Specify AS-TL.

Singapore HQ

Arco Illumination Pte. Ltd.
No. 8 Penjuru Lane
Singapore, 609189

Online

arco-illumination.com
info@arco-illumination.com

OEM · Distributor

partnerships@arco-illumination.com

Protected by an 80+ patent portfolio granted and pending across US, EU, Asia.

© 2026 Arco Illumination Pte. Ltd. All rights reserved. Specs subject to change.